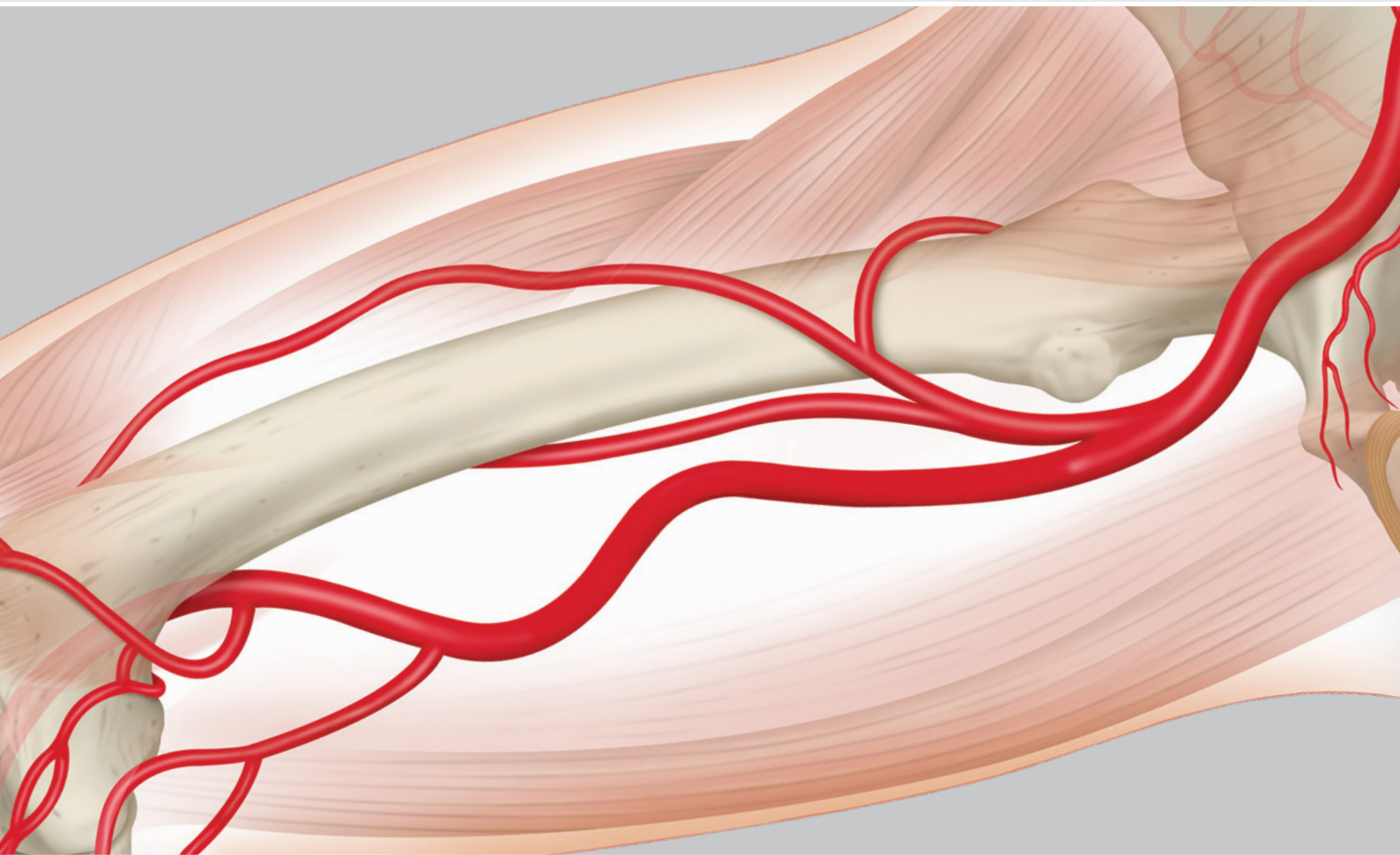


# Femoropopliteal

## Procedure guide



# Table of contents

PAD facts.....	3
Advancing PAD treatment.....	4-5
Femoropopliteal system.....	6-7
Access.....	8
Target.....	9-12
Treat.....	13-19

## Ordering Information

Access.....	20
Target.....	21-23
Treat.....	24-33

## Fight against disease

For more than half a century, Cook Medical has worked shoulder to shoulder with the pioneers of peripheral medicine to deliver the technologies that advance minimally invasive healthcare.

Today, we are even more focused on the fight against peripheral arterial disease (PAD) of the legs and critical limb ischemia (CLI), which results when PAD progresses. We move medicine forward by doing the right thing for the right reason and never compromising when it comes to patient care.

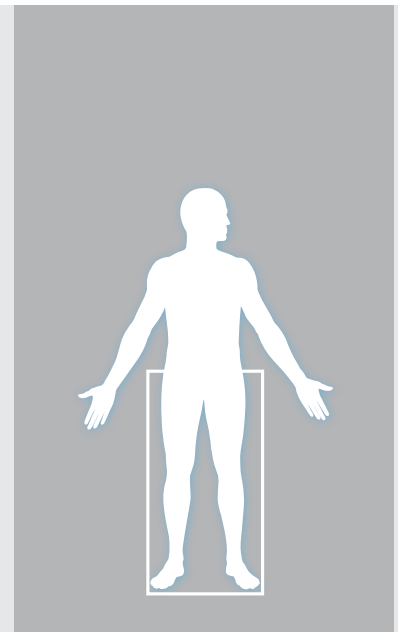
## PAD facts

Approximately **41 million** people in Western Europe and the United States suffer from peripheral arterial disease (PAD).<sup>1</sup>

PAD is underdiagnosed. For every symptomatic patient, there are three to four who are asymptomatic.<sup>2</sup>

**Critical limb ischemia (CLI)** does exhibit symptoms and is the end stage of lower extremity PAD. Severe obstruction of blood flow results in ischemic rest pain, ulcers, and a significant risk for limb loss.

**25%** of CLI patients undergo amputation as a primary treatment.<sup>2</sup>



**PAD AFFECTS**

**41**  
**MILLION**

**PEOPLE IN EUROPE  
AND NORTH AMERICA**

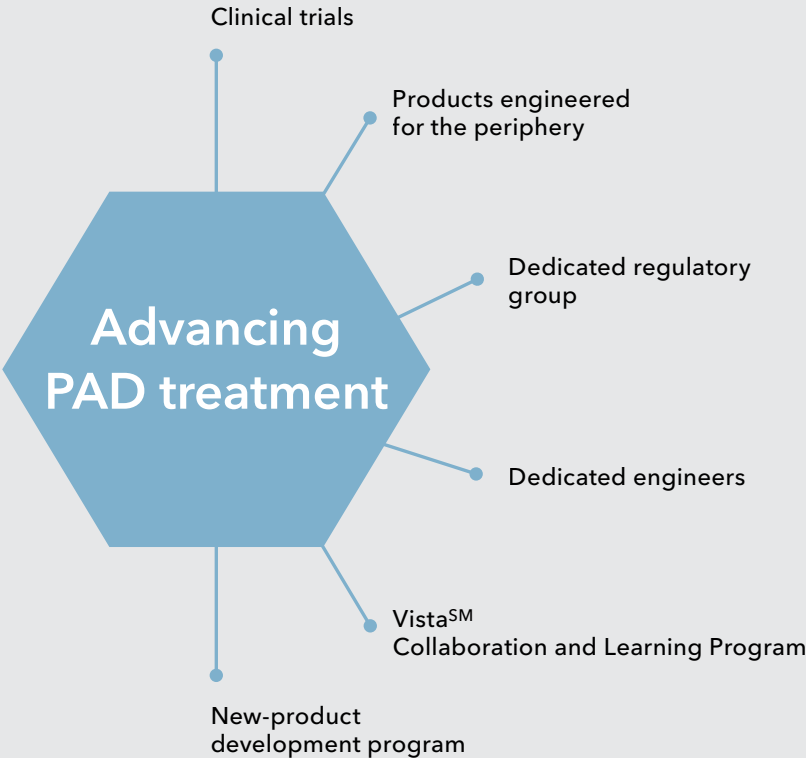
1. Yost ML. What is PAD's prevalence and overall economic impact? Presented at: New Cardiovascular Horizons (NCVH) 2012; June 6-9, 2012; New Orleans, Louisiana, USA.


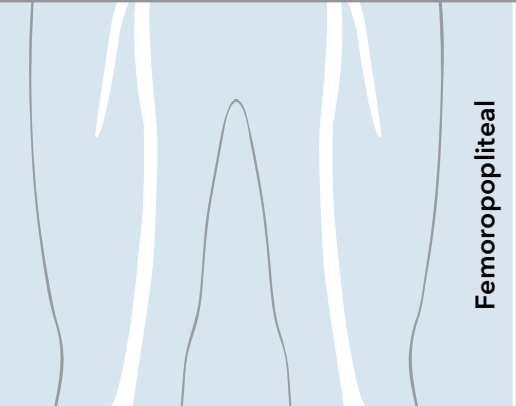
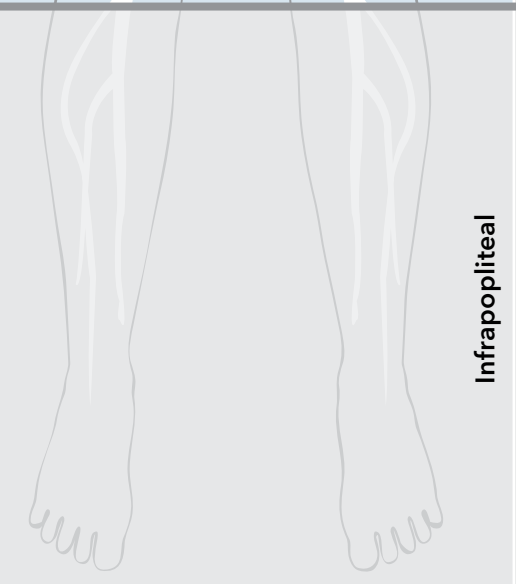
2. Norgren L, Hiatt WR, Dormandy JA, et al. Inter-society consensus for the management of peripheral arterial disease (TASC II). *Eur J Vasc Endovasc Surg.* 2007;33 Suppl 1:S1-S75.

# Advancing PAD treatment

Cook Medical is focused on the treatment of PAD with a comprehensive line of peripheral products. In addition, our clinical trials and educational workshops can help you efficiently and successfully treat the disease.

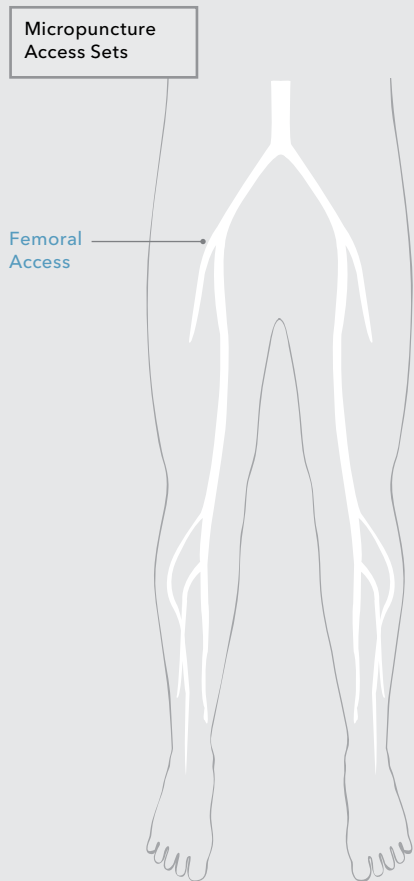
Your focus is on the distinct challenges that each patient presents. Our focus is on supporting you with solutions that increase efficiency and improve outcomes. Our goal is to be a better procedural partner by providing you with the tools you need to access, target, and treat disease effectively.



	Access	Target	Treat
 Iliac	<p><b>Micropuncture®</b> PERFORMER INTRODUCER SETS</p> <p><b>Percutaneous Entry</b> NEEDLE</p> <p><b>Fixed Core</b> WIRE GUIDE</p>	<p><b>Royal Flush® Plus</b> BEACON® TIP CATHETER</p> <p><b>Flexor® Ansel</b> GUIDING SHEATH</p> <p><b>Flexor Raabe</b> GUIDING SHEATH</p> <p><b>Flexor Balkin</b> GUIDING SHEATH</p> <p><b>Roadrunner® UniGlide®</b> HYDROPHILIC WIRE GUIDE</p>	<p><b>Zilver® 518®</b> VASCULAR SELF-EXPANDING STENT</p> <p><b>Zilver 518 RX</b> VASCULAR SELF-EXPANDING STENT - RAPID EXCHANGE</p> <p><b>Advance® 18 PTX®</b> DRUG-ELUTING PTA BALLOON DILATATION CATHETER</p> <p><b>Advance 18LP</b> LOW PROFILE PTA BALLOON DILATATION CATHETER</p> <p><b>Zilver Flex® 35</b> VASCULAR SELF- EXPANDING STENT</p> <p><b>Formula® 535</b> VASCULAR BALLOON- EXPANDABLE STENT</p> <p><b>Advance 35LP</b> LOW PROFILE BALLOON DILATATION CATHETER</p>
 Femoropopliteal	<p><b>Micropuncture</b> PERFORMER INTRODUCER SETS</p> <p><b>Percutaneous Entry</b> NEEDLE</p> <p><b>Fixed Core</b> WIRE GUIDE</p>	<p><b>Flexor Ansel</b> GUIDING SHEATH</p> <p><b>Flexor Raabe</b> GUIDING SHEATH</p> <p><b>Flexor Balkin</b> GUIDING SHEATH</p> <p><b>Royal Flush Plus</b> BEACON TIP CATHETER</p> <p><b>Roadrunner® UniGlide®</b> HYDROPHILIC WIRE GUIDE</p> <p><b>Torcon NB® Advantage</b> BEACON TIP ANGIOGRAPHIC CATHETER</p> <p><b>CXI®</b> SUPPORT CATHETER</p>	<p><b>Zilver PTX</b> DRUG-ELUTING PERIPHERAL STENT</p> <p><b>Zilver Flex 35</b> VASCULAR SELF- EXPANDING STENT</p> <p><b>Advance 18 PTX</b> DRUG-ELUTING PTA BALLOON DILATATION CATHETER</p> <p><b>Advance 18LP</b> LOW PROFILE PTA BALLOON DILATATION CATHETER</p> <p><b>Advance 35LP</b> LOW PROFILE PTA BALLOON DILATATION CATHETER</p>
 Infrapopliteal	<p><b>Micropuncture</b> PEDAL ACCESS SETS</p> <p><b>Percutaneous Entry</b> NEEDLE</p> <p><b>Fixed Core</b> WIRE GUIDE</p>	<p><b>Flexor Ansel</b> GUIDING SHEATH</p> <p><b>Flexor Raabe</b> GUIDING SHEATH</p> <p><b>Flexor Balkin</b> GUIDING SHEATH</p> <p><b>Shuttle® Tibial</b> INFRAPOPLITEAL ACCESS SYSTEM</p> <p><b>Slip-Cath</b> HYDROPHILIC BEACON TIP CATHETER</p> <p><b>Approach Hydro ST</b> WIRE GUIDE</p> <p><b>Approach CTO</b> WIRE GUIDE</p> <p><b>CXI</b> SUPPORT CATHETER</p>	<p><b>Formula 414RX</b> VASCULAR BALLOON- EXPANDABLE STENT</p> <p><b>Formula 418</b> VASCULAR BALLOON- EXPANDABLE STENT</p> <p><b>Advance Micro™ 14</b> ULTRA LOW-PROFILE PTA-BALLOON</p> <p><b>Advance 14LP</b> LOW PROFILE PTA BALLOON DILATATION CATHETER</p> <p><b>Advance 18 PTX</b> DRUG-ELUTING PTA BALLOON DILATATION CATHETER</p>

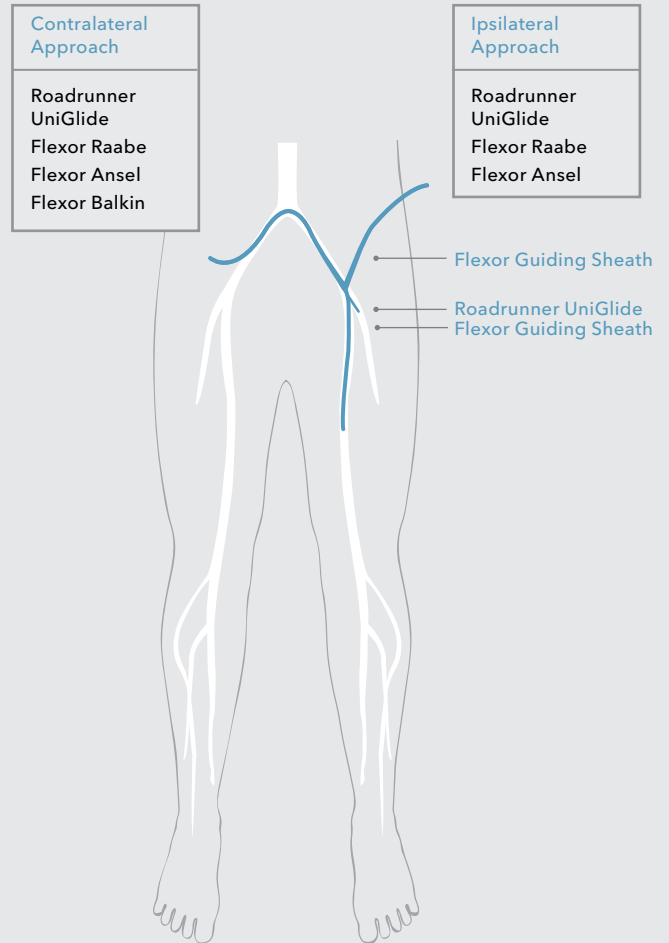
Some products or part numbers may not be available in all markets.  
Contact your local Cook representative or Customer Service for details.

# 1. Access



Gain access for femoropopliteal procedures with Micropuncture Introducer Sets.

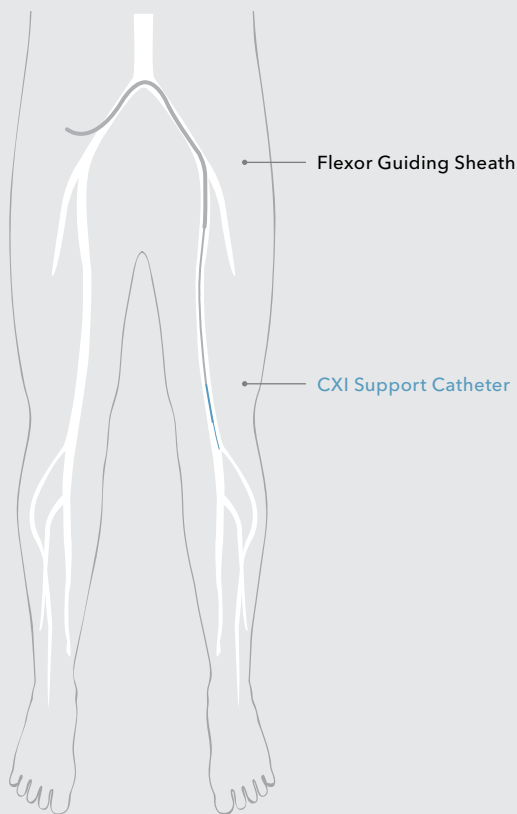
# 2. Target



Target the lesion with a contralateral or ipsilateral approach using our Flexor Raabe or Flexor Ansel guiding sheaths.

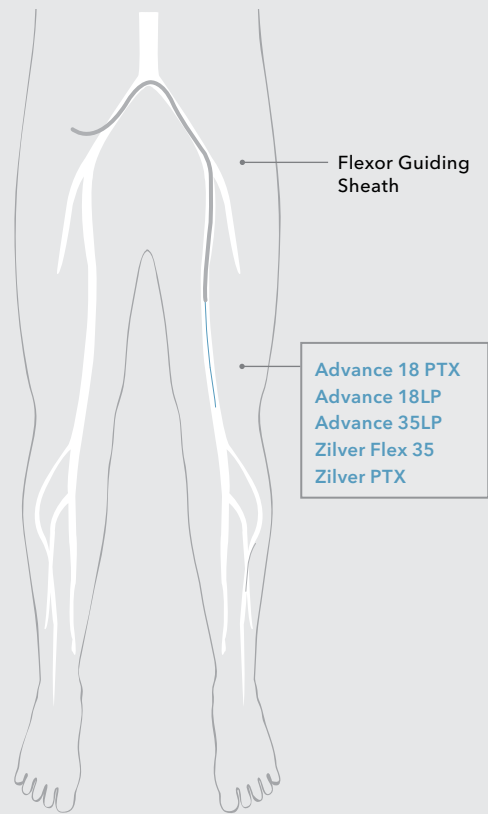
### 3. Target

(Reach and cross the lesion)



When crossing lesions, Flexor guiding sheaths provide support for the wire guide, allowing you to reach and cross the lesion.

### 4. Treat



For treatment of femoropopliteal lesions, choose from the Advance 18LP or Advance 35LP PTA balloons, the Zilver Flex 35 vascular stent, or the drug-eluting Zilver PTX self-expanding stent.

# Experience ultra-smooth insertion with our Transitionless-Tip™

## Micropuncture® INTRODUCER SET

### Fewer bleeding complications

In a study by Shah et al., access-site bleeding complication rates dropped from 11.7% to 2.6% when Micropuncture was used.<sup>1</sup>

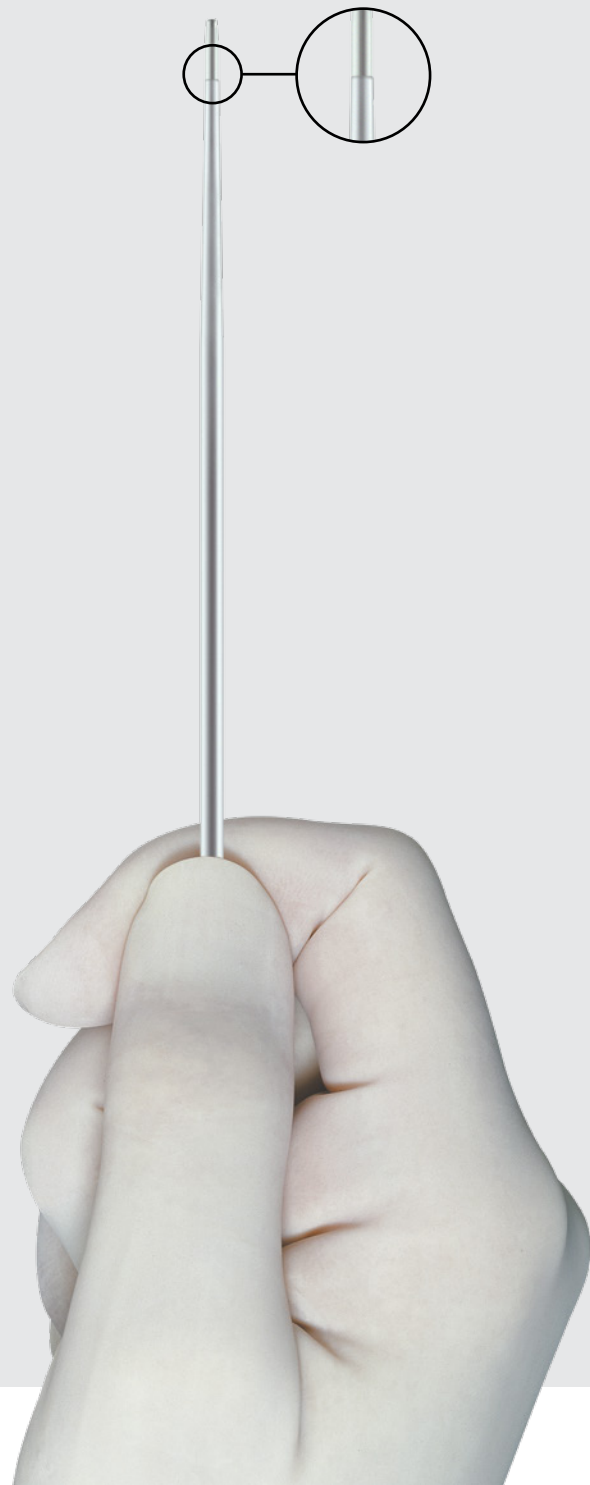
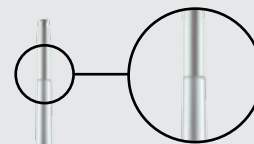
### Smooth entry

The introducer's Transitionless-Tip is engineered to glide into the vessel with less force.<sup>2</sup>

### High visibility

- The sharp, 21-gage needle features EchoTip® technology that enhances ultrasound visibility.
- The supportive nitinol wire has a radiopaque tip for excellent visibility under fluoroscopy.

For order numbers and specifications, see page 20.



1. Shah H, Bansal A, Srinivasan V, et al. Vascular access site bleeding complications with Micropuncture needle in patients undergoing cardiac catheterization: a comparison with conventional Cook needle. Poster presented at: The Society for Cardiovascular Angiography and Interventions 29th Annual Scientific Sessions; May 10-13, 2006; Chicago, IL. Abstract D-45.

2. Data on file.



# Target the vessel with confidence

## Flexor® Technology

GUIDING SHEATHS

### Trackability and choice

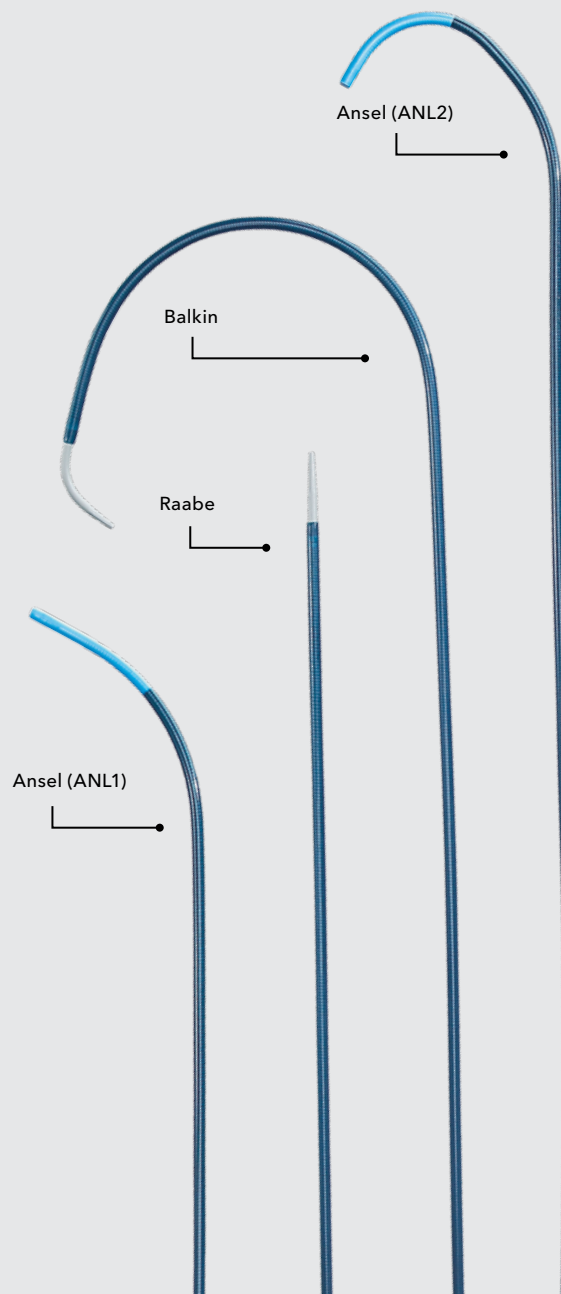
The **Flexor Ansel** offers gentle curves, a soft tip, and a hydrophilic coating, which enhance trackability. The .018 inch, .035 inch, and .038 inch compatible dilators provide choice in platform.

### Versatility

The straight configuration of the **Flexor Raabe** sheath provides a platform able to meet your procedural needs.

### Dependable

The **Flexor Balkin** has a 180° curve that anchors across the bifurcation to stabilise your contralateral access.



For order numbers and specifications, see page 21.

# Combine the performance you expect with increased usability

## Roadrunner® UniGlide®

HYDROPHILIC WIRE GUIDE

### Familiar feel

UniGlide offers a familiar feel and the performance you expect.

### Enhanced usability

Each UniGlide is packaged with a torque device and a unique scoop-shaped wire inserter.

### 320 cm length

The 320 cm length can facilitate radial and lower-limb procedures as well as the use of 150 cm balloon angioplasty catheters.

The tungsten-impregnated jacket enhances visibility.

The tapered nitinol mandril offers 1:1 torque response.

The durable hydrophilic coating provides trackability and pushability.

#### Torque device



#### Scoop-shaped wire inserter



For order numbers and specifications, see page 22.

# Achieve vessel selection with pushability, control, and finesse

## Torcon NB<sup>®</sup> Advantage

BEACON<sup>®</sup> TIP ANGIOGRAPHIC CATHETER

### Maximized pushability

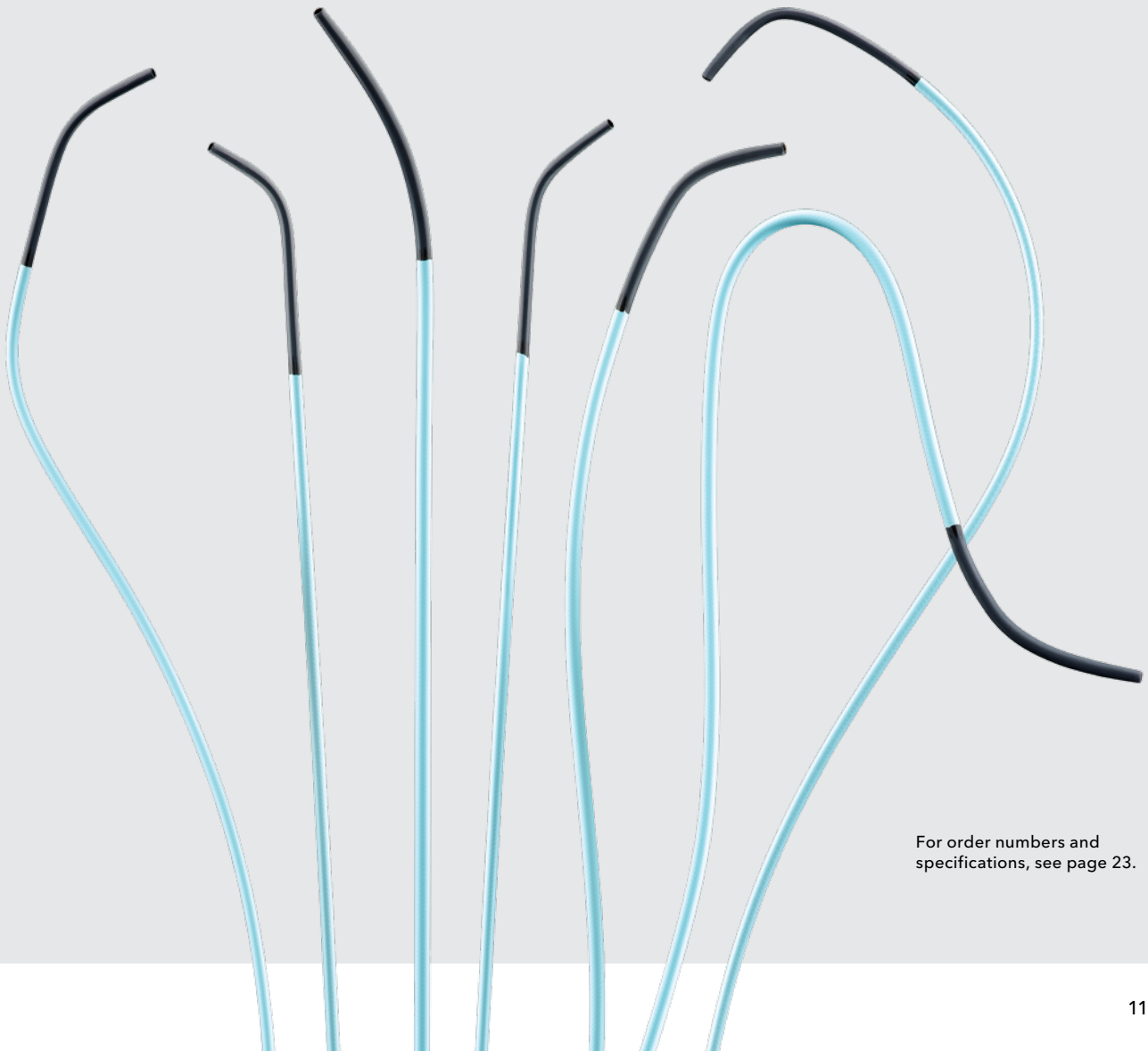
The stainless steel braid provides 1:1 torque response, pushability, and kink resistance.

### Enhanced selectivity

The tapered tip smoothly transitions to the wire to allow excellent seating within a vessel ostium.

### Visibility

Beacon<sup>®</sup> Tip radiopacity ensures excellent visibility during catheter manipulation.



For order numbers and specifications, see page 23.

# Rely on your everyday support catheter for leg procedures

**CXI<sup>®</sup>**  
SUPPORT CATHETER

## Exceptional pushability

CXI's stainless steel braid provides a one-to-one torque response, exceptional pushability, and kink resistance.

## Coaxial capability

To increase support, the 2.6 Fr size can fit coaxially in a 4 Fr catheter that has a .035 inch endhole.

## Enhanced visibility

Radiopaque bands at the tip and at 5, 10, and 15 cm enhance visualisation and allow you to measure vessel segments. Exterior depth markers clearly show progression into the sheath.

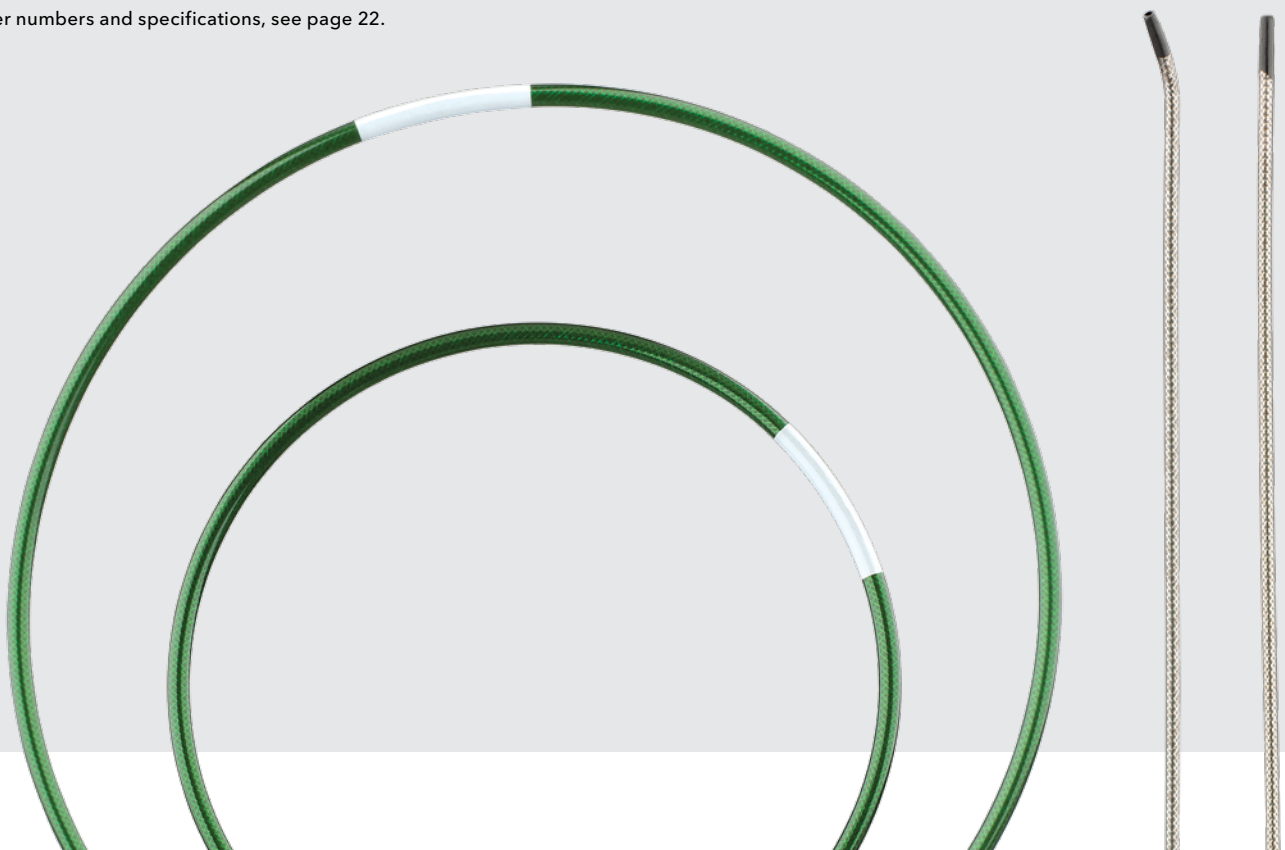


Braid technology



Tip options

For order numbers and specifications, see page 22.



# Deliver paclitaxel via PTA with this combination therapy device

## Advance® 18 PTX®

DRUG-ELUTING PTA BALLOON DILATATION CATHETER

### Combination therapy

The Advance® 18 PTX® combines the benefits of mechanical and drug therapies.

### Complete coverage

The entire balloon is coated before being folded, allowing more drug-to-vessel contact.

### No additives

Proprietary drug coating involves no polymers or excipients.



For order numbers and specifications, see page 28.

# Expand your possibilities

## Advance<sup>®</sup> 18LP

LOW-PROFILE PTA BALLOON DILATATION CATHETER

### Broad offering

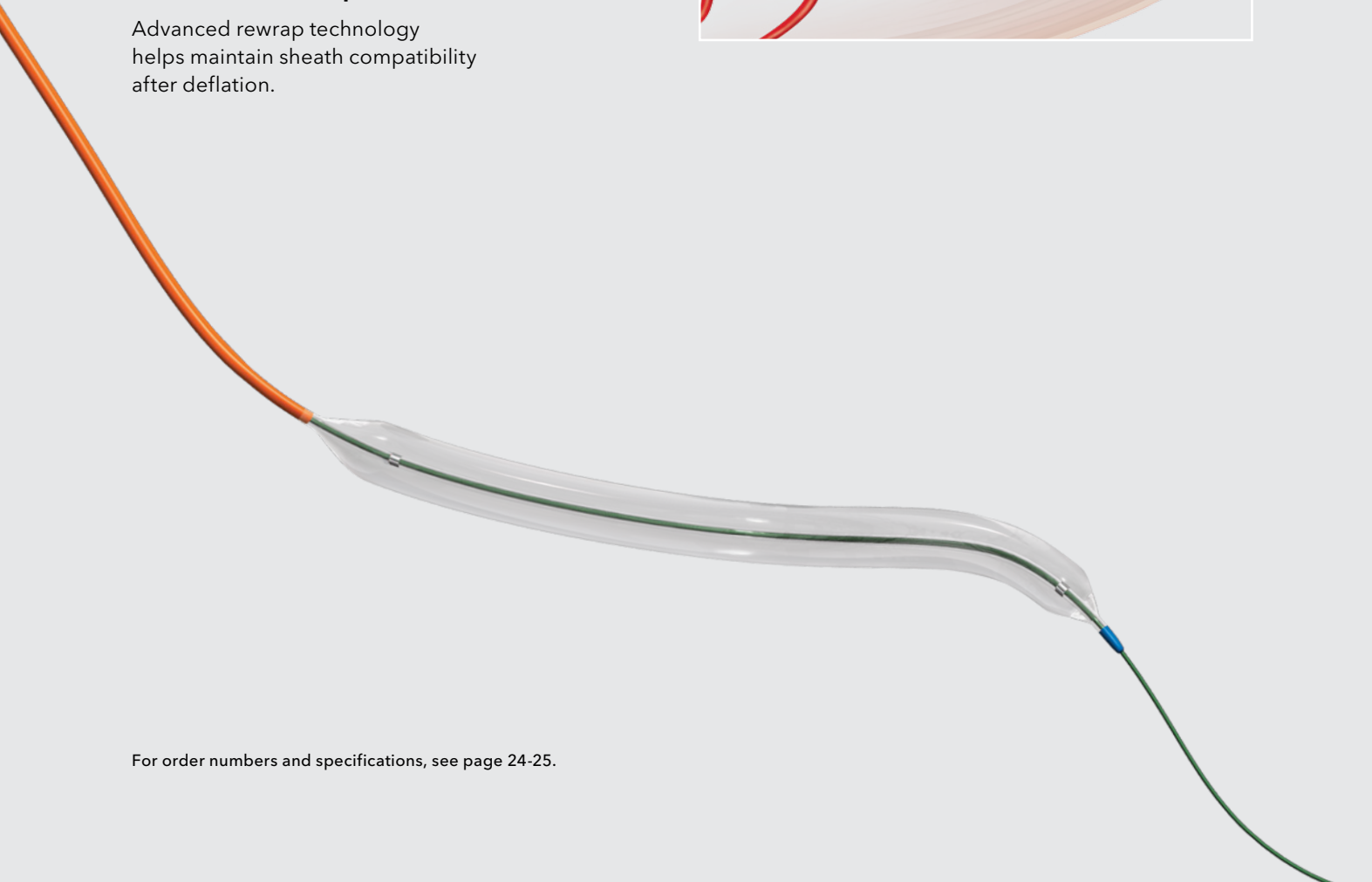
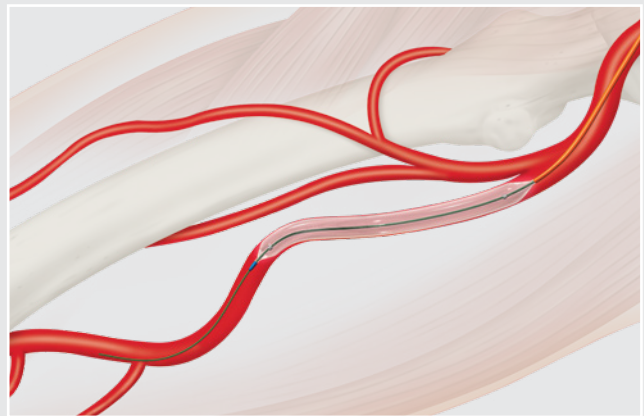
Advance 18LP is available in nearly 200 size, length, and shaft configuration options.

### Trackability

A flexible tip enhances your ability to navigate tortuous vasculature.

### Enhanced rewrap

Advanced rewrap technology helps maintain sheath compatibility after deflation.



For order numbers and specifications, see page 24-25.

## Advance 35LP

LOW-PROFILE PTA BALLOON DILATATION CATHETER

### Exceptional rewrap

Starcast™ balloon shoulders facilitate easy sheath reinsertion so that you can repeat the treatment during the same procedure.

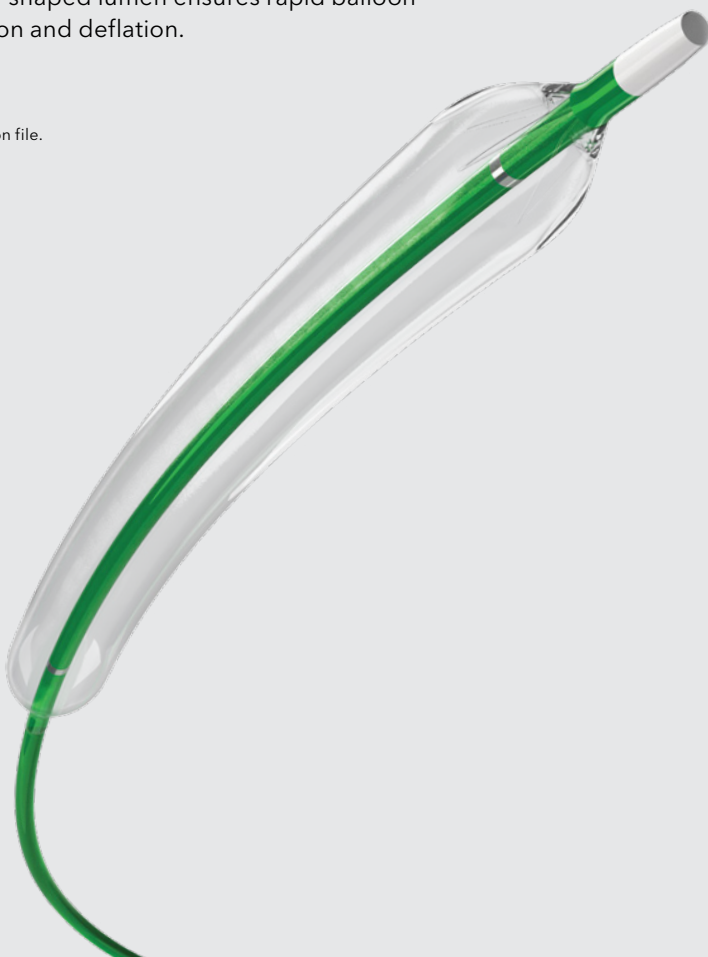
### Reduced friction

The Pliaform™ balloon texture reduces friction by more than 50%<sup>1</sup> to help you cross lesions and retract the balloon after deflation.

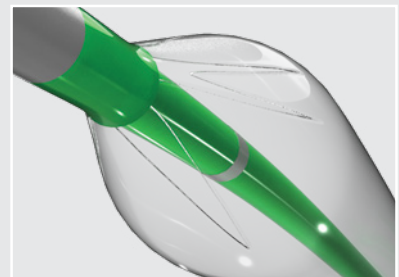
### Rapid inflation and deflation

The D-shaped lumen ensures rapid balloon inflation and deflation.

1. Data on file.



Pliaform™ balloon texture



Starcast™ shoulders

For order numbers and specifications, see page 26-27.

# Established technology

## Zilver®—the next-generation nitinol stent technology

Zilver® PTX® is based on the next-generation Zilver Flex stent platform, which is known for its balance of flexibility, fracture resistance, and radial force. The combination of drug elution and a strong yet flexible scaffold is the **standard of care for SFA lesions**.

### Stable deployment

Linear-cell stent design ensures stable on-target deployment.

### Fracture-resistant surface

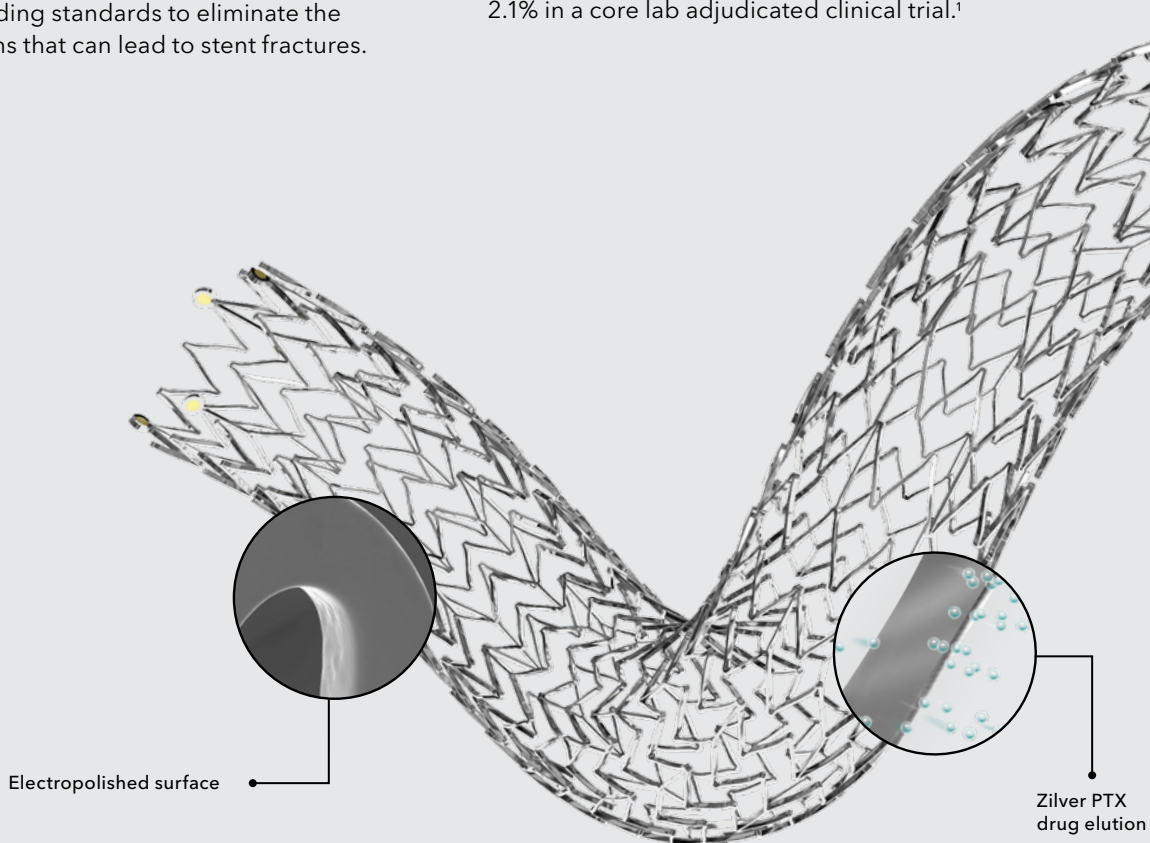
Each stent is electropolished to Cook's industry-leading standards to eliminate the imperfections that can lead to stent fractures.

### SFA balanced design

Strength and flexibility balanced specifically for the SFA ensures exceptional durability.

### Proven durability

The 36-month fracture rate of this stent was just 2.1% in a core lab adjudicated clinical trial.<sup>1</sup>

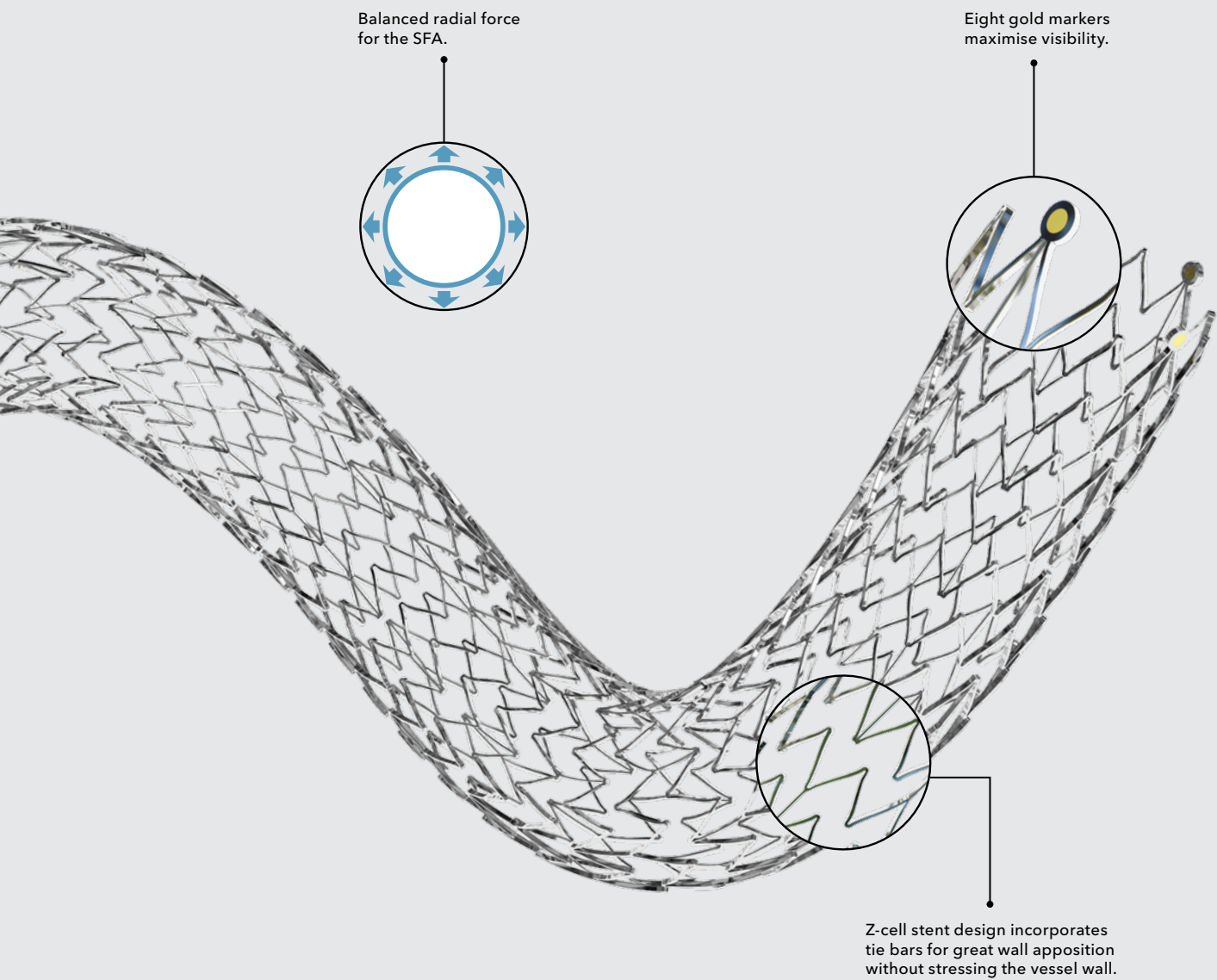


For order numbers and specifications, see page 29-31.



**Zilver Flex® 35**  
VASCULAR SELF-EXPANDING STENT

**Zilver® PTX®**  
DRUG-ELUTING PERIPHERAL STENT



1. Dake M. The Zilver PTX randomized trial of paclitaxel-eluting stents for femoropopliteal disease: 36-month update. Presented at: CIRSE 2013; September 14-18, 2013; Barcelona, Spain.

# Rely on the proven drug effect of Zilver<sup>®</sup> PTX<sup>®</sup> to achieve longer-lasting results

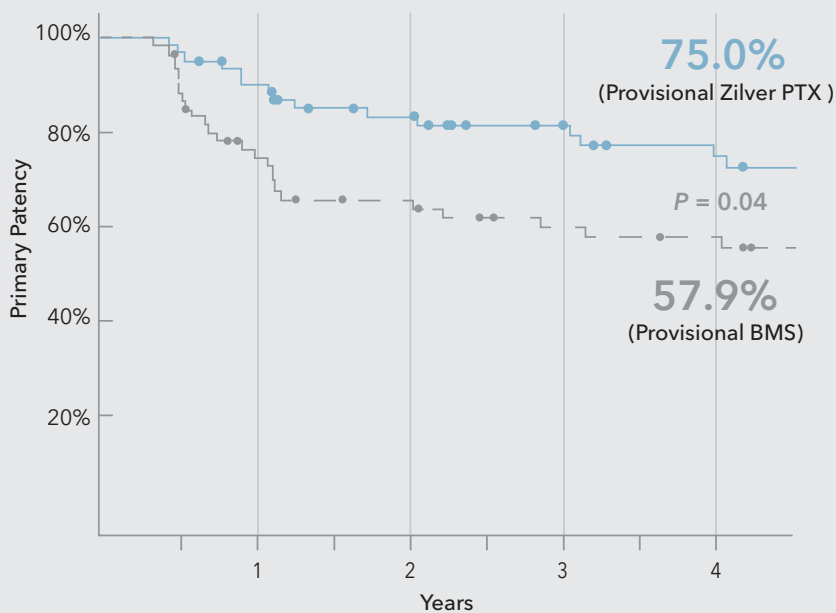
## Superior results

A multicenter, international randomised trial demonstrated the **clear drug effect** of Zilver PTX. At four years, provisional Zilver PTX achieved a 75.0% patency rate, compared with 57.9% for provisional bare-metal stents.<sup>2</sup>

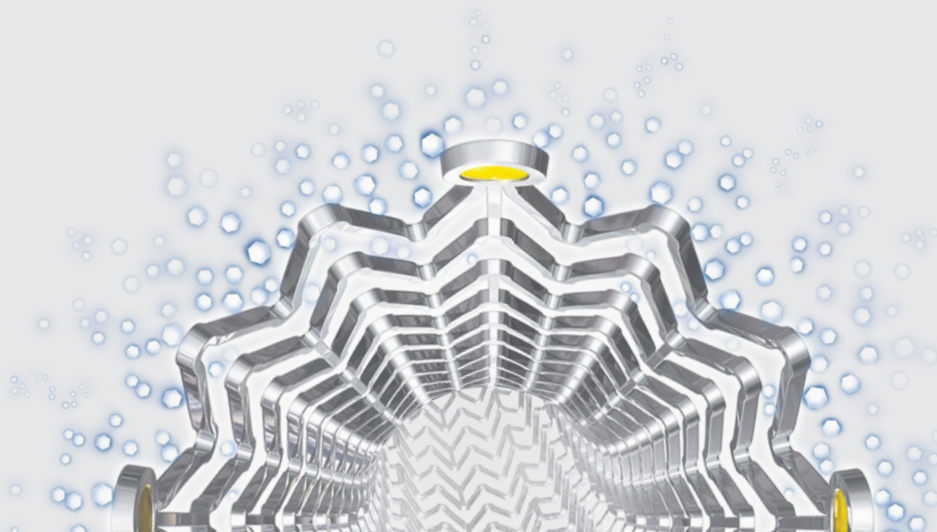
### 4-year drug effect—patency (PSVR < 2.0)<sup>2</sup>

(Provisional Zilver PTX vs. Provisional BMS)

#### Randomised study



**41%**  
Reduction in restenosis due to the drug.<sup>2</sup>



For order numbers and specifications, see pages 31.

## Longer-lasting treatment

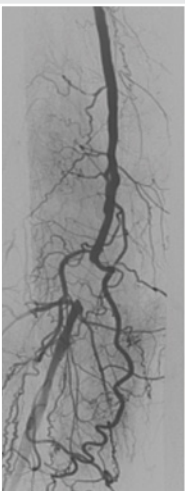
**Zilver PTX provides sustained effectiveness.**

With Zilver PTX, you can achieve longer-lasting outcomes that are superior to the outcomes achieved by bare-metal stents.

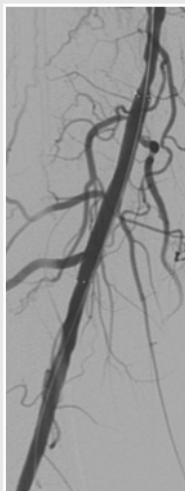
### CASE 1

**54-year-old male diabetic**

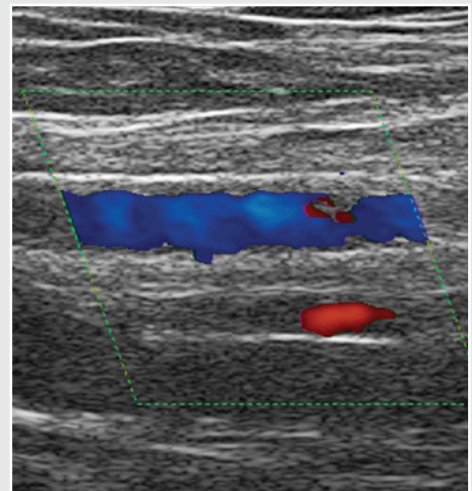
Preprocedure



Postprocedure



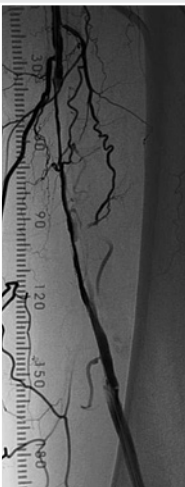
4.9 years later



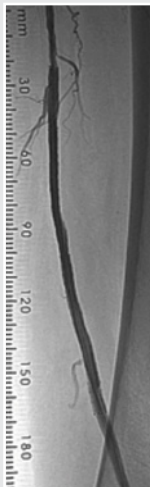
### CASE 2

**63-year-old male diabetic**

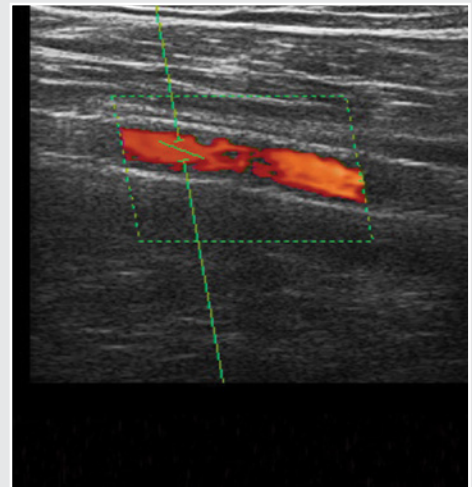
Preprocedure



Postprocedure



4.8 years later



Images courtesy of Dr. Fabrizio Fanelli, University of Rome, Italy.

2. Ansel G: The Zilver PTX randomized trial of paclitaxel-eluting stents for femoropopliteal disease: 4-year results. Presented at: Vascular Interventional Advances (VIVA) 2013; October 8-11, 2013; Las Vegas, Nevada.

# Micropuncture®

INTRODUCER SET

Order Number	Reference Part Number	Outer Catheter Fr	Outer Catheter Length cm	Wire Guide Diameter inch	Wire Guide Length cm	Needle gage/Length cm
<b>.018 inch Nitinol Wire Guide – Standard Cannula</b>						
G47942	MPIS-401-NT-SST	4.0	10	.018	40	21/7
G43870	MPIS-501-NT-SST	5.0	10	.018	40	21/7
G56201	MPIS-402-NT-U-SST	4.0	10	.018	40	21/7
G56202	MPIS-502-NT-U-SST	5.0	10	.018	40	21/7
<b>.018 inch Stainless Steel Wire Guide – Standard Cannula</b>						
G47949	MPIS-401-U-SST	4.0	10	.018	40	21/7
G47950	MPIS-405-SST	4.0	10	.018	40	21/7
G43869	MPIS-501-U-SST	5.0	10	.018	40	21/7
G43872	MPIS-505-SST	5.0	10	.018	40	21/7
<b>.018 inch Nitinol Wire Guide – Stiffened Cannula</b>						
G48003	MPIS-401-10.0-SC-NT-SST	4.0	10	.018	40	21/7
G35550	MPIS-402-10.0-SC-NT-U-SST	4.0	10	.018	40	21/7
G48007	MPIS-501-10.0-SC-NT-SST	5.0	10	.018	40	21/7
G35551	MPIS-502-10.0-SC-NT-U-SST	5.0	10	.018	40	21/7
G48005	MPIS-501-15.0-SC-NT-SST	5.0	15	.018	45	21/7

Some products or part numbers may not be available in all markets. Contact your local Cook representative or Customer Service for details.

## Flexor® Technology

GUIDING SHEATHS

Order Number	Reference Part Number	Introducer ID Fr	Wire Guide Diameter inch	Sheath Length cm	Sheath ID inch
<b>Flexor Shuttle® Tibial – Tuohy-Borst valve</b>					
G48190	KSAW-4.0-18/35-90-RB-SHTL-HC	4.0	.018/.035	90	.059
G48193	KSAW-4.0-18/35-110-RB-SHTL-HC	4.0	.018/.035	110	.059
G30009	KSAW-5.0-18/38-90-RB-SHTL-HC	5.0	.018/.038	90	.074
G48194	KSAW-5.0-18/38-110-RB-SHTL-HC	5.0	.018/.038	110	.074
<b>Flexor Ansel – Check-Flo valve</b>					
G56229	KCFW-4.0-35-55-RB-HFANLO-HC	4.0	.035	55	.059
G56234	KCFW-4.0-35-55-RB-HFANL1-HC	4.0	.035	55	.059
G56230	KCFW-5.0-35-55-RB-HFANLO-HC	5.0	.035	55	.074
G56235	KCFW-5.0-35-55-RB-HFANL1-HC	5.0	.035	55	.074
G56231	KCFW-6.0-35-55-RB-HFANLO-HC	6.0	.035	55	.087
G56236	KCFW-6.0-35-55-RB-HFANL1-HC	6.0	.035	55	.087
G56232	KCFW-7.0-35-55-RB-HFANLO-HC	7.0	.035	55	.100
G49043	KCFW-7.0-35-55-RB-HFANL1-HC	7.0	.035	55	.100
G48186	KCFW-4.0-18/35-45-RB-ANLO-HC	4.0	.018/.035	45	.059
G48188	KCFW-4.0-18/35-90-RB-ANLO-HC	4.0	.018/.035	90	.059
G48191	KCFW-4.0-18/35-110-RB-ANLO-HC	4.0	.018/.035	110	.059
G44153	KCFW-5.0-18/38-45-RB-ANLO-HC	5.0	.018/.038	45	.074
G29981	KCFW-5.0-18/38-45-RB-ANL1-HC	5.0	.018/.038	45	.074
G48189	KCFW-5.0-18/38-90-RB-ANLO-HC	5.0	.018/.038	90	.074
G48192	KCFW-5.0-18/38-110-RB-ANLO-HC	5.0	.018/.038	110	.074
G44154	KCFW-6.0-18/38-45-RB-ANLO-HC	6.0	.018/.038	45	.087
G29982	KCFW-6.0-18/38-45-RB-ANL1-HC	6.0	.018/.038	45	.087
G44155	KCFW-7.0-18/38-45-RB-ANLO-HC	7.0	.018/.038	45	.100
<b>Flexor Raabe – Check-Flo valve</b>					
G48187	KCFW-4.0-35-55-RB-RAABE	4.0	.035	55	.059
G13009	KCFW-5.0-38-55-RB-RAABE	5.0	.038	55	.074
G13091	KCFW-5.0-38-70-RB-RAABE	5.0	.038	70	.074
G13069	KCFW-5.0-38-90-RB-RAABE	5.0	.038	90	.074
<b>Flexor Balkin – Check-Flo valve</b>					
G12656	KCFW-5.5-38-40-RB-BLKN	5.5	.038	40	.081
G32208	KCFW-5.5-38-40-RB-BLKN-HC	5.5	.038	40	.081
G10383	KCFW-6.0-38-40-RB-BLKN	6.0	.038	40	.087
G32224	KCFW-6.0-38-40-RB-BLKN-HC	6.0	.038	40	.087
G10384	KCFW-7.0-38-40-RB-BLKN	7.0	.038	40	.100
G32225	KCFW-7.0-38-40-RB-BLKN-HC	7.0	.038	40	.100

Some products or part numbers may not be available in all markets. Contact your local Cook representative or Customer Service for details.

## Roadrunner® UniGlide®

HYDROPHILIC WIRE GUIDE

Order Number	Reference Part Number	Diameter inch	Length cm	Floppy Tip Length cm	Tip Configuration
<b>Standard Shaft</b>					
Nitinol with a Tungsten-Impregnated Polyurethane Jacket					
G56149	HPW-35-150	.035	150	3	Straight
G56150	HPW-35-180	.035	180	3	
G30502	HPW-35-260	.035	260	3	
G56173	HPWA-35-150	.035	150	3	Angled
G56174	HPWA-35-180	.035	180	3	
G30492	HPWA-35-260	.035	260	3	
<b>Stiff Shaft</b>					
Nitinol with a Tungsten-Impregnated Polyurethane Jacket					
G56152	HPWS-35-150	.035	150	3	Straight
G56153	HPWS-35-180	.035	180	3	
G30496	HPWS-35-260	.035	260	3	
G56176	HPWAS-35-150	.035	150	3	Angled
G56177	HPWAS-35-180	.035	180	3	
G30506	HPWAS-35-260	.035	260	3	

Some products or part numbers may not be available in all markets. Contact your local Cook representative or Customer Service for details.

## CXI®



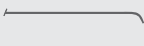
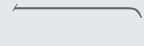

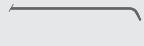
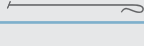
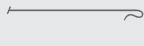
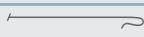
SUPPORT CATHETER

Order Number	Reference Part Number	Fr	Guide Diameter inch	Length cm	Tip Configuration
<b>With platinum-Iridium marker bands</b>					
2.6 Fr					
G18377	CXI-2.6-18-65-0	2.6	.018	65	Straight
G56550	CXI-2.6-18-90-0	2.6	.018	90	
G23161	CXI-2.6-18-135-0	2.6	.018	135	
G56552	CXI-2.6-18-150-0	2.6	.018	150	Angled
G18378	CXI-2.6-18-65-ANG	2.6	.018	65	
G56551	CXI-2.6-18-90-ANG	2.6	.018	90	
G23163	CXI-2.6-18-135-ANG	2.6	.018	135	Angled2
G56553	CXI-2.6-18-150-ANG	2.6	.018	150	
G23862	CXI-2.6-18-65-ANG2	2.6	.018	65	
G23863	CXI-2.6-18-90-ANG2	2.6	.018	90	Angled2
G23864	CXI-2.6-18-135-ANG2	2.6	.018	135	
G23865	CXI-2.6-18-150-ANG2	2.6	.018	150	
<b>With tungsten marker bands</b>					
4.0 Fr					
G52546	CXI-4.0-35-90-P-NS-0	4.0	.035	90	Straight
G52542	CXI-4.0-35-135-P-NS-0	4.0	.035	135	
G52544	CXI-4.0-35-150-P-NS-0	4.0	.035	150	
G52547	CXI-4.0-35-90-P-NS-DAV	4.0	.035	90	DAV
G52543	CXI-4.0-35-135-P-NS-DAV	4.0	.035	135	
G52545	CXI-4.0-35-150-P-NS-DAV	4.0	.035	150	

Some products or part numbers may not be available in all markets. Contact your local Cook representative or Customer Service for details.

# Torcon NB<sup>®</sup> Advantage

BEACON<sup>™</sup> TIP ANGIOGRAPHIC CATHETER

Order Number	Reference Part Number	Catheter Fr	Accepts Wire Guide Diameter inch	Length cm	Tip Configuration	
G53763	HNBR4.0-35-65-P-NS-C1	4.0	.035	65	Cobra 1 (C1)	
G56340	HNBR4.0-35-100-P-NS-C1	4.0	.035	100		
G08441	HNBR5.0-35-65-P-NS-C1	5.0	.035	65		
G08446	HNBR5.0-38-65-P-NS-C1	5.0	.038	65	Cobra 2 (C2)	
G51313	HNBR4.0-35-65-P-NS-C2	4.0	.035	65		
G56341	HNBR4.0-35-100-P-NS-C2	4.0	.035	100		
G08442	HNBR5.0-35-65-P-NS-C2	5.0	.035	65	Davis (DAV)	
G08447	HNBR5.0-38-65-P-NS-C2	5.0	.038	65		
G09967	HNBR5.0-38-100-P-NS-C2	5.0	.038	100		
G51303	HNBR4.0-35-100-P-NS-DAV	4.0	.035	100	Kumpe (KMP)	
G11414	HNBR5.0-35-65-P-NS-DAV	5.0	.035	65		
G08699	HNBR5.0-35-100-P-NS-DAV	5.0	.035	100		
G08581	HNBR5.0-38-100-P-NS-DAV	5.0	.038	100	Multipurpose (MPA)	
G51310	HNBR4.0-35-100-P-NS-KMP	4.0	.035	100		
G11458	HNBR5.0-35-65-P-NS-KMP	5.0	.035	65		
G09469	HNBR5.0-38-65-P-NS-KMP	5.0	.038	65	Vertebral (VERT)	
G56371	HNBR4.0-35-65-P-NS-MPA	4.0	.035	65		
G56350	HNBR4.0-35-100-P-NS-MPA	4.0	.035	100		
G11195	HNBR5.0-38-65-P-NS-MPA	5.0	.038	65	Visceral Selective VS1	
G11205	HNBR5.0-38-100-P-NS-MPA	5.0	.038	100		
G53762	HNBR4.0-35-100-P-NS-VERT	4.0	.035	100		
G11483	HNBR5.0-35-100-P-NS-VERT	5.0	.035	100	Visceral Selective VS2	
G11484	HNBR5.0-38-100-P-NS-VERT	5.0	.038	100		
G11486	HNBR5.0-38-65-P-NS-VS1	5.0	.038	65		
G12715	HNBR5.0-38-65-P-NS-VS2	5.0	.038	65	Visceral Selective VS3	
G11190	HNBR5.0-38-80-P-NS-VS2	5.0	.038	80		
G11191	HNBR5.0-38-80-P-NS-VS3	5.0	.038	80		

Some products or part numbers may not be available in all markets. Contact your local Cook representative or Customer Service for details.

Advance<sup>®</sup>18LP

LOW-PROFILE PTA BALLOON DILATATION CATHETER

Order Number	Reference Part Number	Accepts Wire Guide Diameter inch	Balloon Inflated Diameter mm	Balloon Length cm	Recommended Introducer Fr	Rated Burst Pressure atm
<b>.018 inch Wire Guide - 80 cm Shaft</b>						
G50225	PTA4-18-80-4-2	.018	4	2	4.0	14
G50227	PTA4-18-80-4-4	.018	4	4	4.0	14
G50229	PTA4-18-80-4-6	.018	4	6	4.0	14
G50231	PTA4-18-80-4-8	.018	4	8	4.0	14
G50232	PTA4-18-80-4-10	.018	4	10	4.0	14
G30894	PTA4-18-80-4-12	.018	4	12	4.0	12
G30895	PTA4-18-80-4-15	.018	4	15	4.0	12
G30896	PTA4-18-80-4-17	.018	4	17	4.0	12
G30897	PTA4-18-80-4-20	.018	4	20	4.0	12
G50234	PTA4-18-80-5-2	.018	5	2	4.0	14
G50236	PTA4-18-80-5-4	.018	5	4	4.0	14
G50238	PTA4-18-80-5-6	.018	5	6	4.0	14
G50240	PTA4-18-80-5-8	.018	5	8	4.0	14
G50242	PTA4-18-80-5-10	.018	5	10	4.0	14
G30900	PTA4-18-80-5-12	.018	5	12	4.0	12
G30901	PTA4-18-80-5-15	.018	5	15	4.0	12
G30902	PTA4-18-80-5-17	.018	5	17	4.0	12
G30903	PTA4-18-80-5-20	.018	5	20	4.0	12
G50244	PTA4-18-80-6-2	.018	6	2	4.0	14
G50246	PTA4-18-80-6-4	.018	6	4	4.0	14
G50248	PTA4-18-80-6-6	.018	6	6	4.0	14
G50250	PTA4-18-80-6-8	.018	6	8	4.0	14
G50252	PTA4-18-80-6-10	.018	6	10	4.0	14
G30906	PTA4-18-80-6-12	.018	6	12	5.0	12
G30907	PTA4-18-80-6-15	.018	6	15	5.0	12
G30908	PTA4-18-80-6-17	.018	6	17	5.0	12
G30909	PTA4-18-80-6-20	.018	6	20	5.0	12
G50254	PTA4-18-80-7-2	.018	7	2	4.0	14
G50256	PTA4-18-80-7-4	.018	7	4	4.0	14
G50258	PTA4-18-80-7-6	.018	7	6	4.0	14
G50260	PTA4-18-80-7-8	.018	7	8	4.0	14
G50263	PTA4-18-80-7-10	.018	7	10	4.0	14
G30912	PTA4-18-80-7-12	.018	7	12	5.0	10
G30913	PTA4-18-80-7-15	.018	7	15	5.0	10
G30914	PTA4-18-80-7-17	.018	7	17	5.0	10
G30915	PTA4-18-80-7-20	.018	7	20	5.0	10
<b>.018 inch Wire Guide - 135 cm Shaft</b>						
G50226	PTA4-18-135-4-2	.018	4	2	4.0	14
G50228	PTA4-18-135-4-4	.018	4	4	4.0	14
G50230	PTA4-18-135-4-6	.018	4	6	4.0	14
G49479	PTA4-18-135-4-8	.018	4	8	4.0	14
G50233	PTA4-18-135-4-10	.018	4	10	4.0	14
G50235	PTA4-18-135-5-2	.018	5	2	4.0	14



Order Number	Reference Part Number	Accepts Wire Guide Diameter inch	Balloon Inflated Diameter mm	Balloon Length cm	Recommended Introducer Fr	Rated Burst Pressure atm
G50237	PTA4-18-135-5-4	.018	5	4	4.0	14
G50239	PTA4-18-135-5-6	.018	5	6	4.0	14
G50241	PTA4-18-135-5-8	.018	5	8	4.0	14
G50243	PTA4-18-135-5-10	.018	5	10	4.0	14
G50245	PTA4-18-135-6-2	.018	6	2	4.0	14
G50247	PTA4-18-135-6-4	.018	6	4	4.0	14
G50249	PTA4-18-135-6-6	.018	6	6	4.0	14
G50251	PTA4-18-135-6-8	.018	6	8	4.0	14
G50253	PTA4-18-135-6-10	.018	6	10	4.0	14
G50255	PTA4-18-135-7-2	.018	7	2	4.0	14
G50257	PTA4-18-135-7-4	.018	7	4	4.0	14
G50259	PTA4-18-135-7-6	.018	7	6	4.0	14
G50262	PTA4-18-135-7-8	.018	7	8	4.0	14
G50264	PTA4-18-135-7-10	.018	7	10	4.0	14

**.018 inch Wire Guide - 150 cm Shaft**

G34323	PTA4-18-150-4-2	.018	4	2	4.0	14
G34324	PTA4-18-150-4-4	.018	4	4	4.0	14
G34325	PTA4-18-150-4-6	.018	4	6	4.0	14
G34326	PTA4-18-150-4-8	.018	4	8	4.0	14
G34327	PTA4-18-150-4-10	.018	4	10	4.0	14
G30949	PTA4-18-150-4-12	.018	4	12	4.0	12
G30950	PTA4-18-150-4-15	.018	4	15	4.0	12
G30951	PTA4-18-150-4-17	.018	4	17	4.0	12
G30952	PTA4-18-150-4-20	.018	4	20	4.0	12
G34328	PTA4-18-150-5-2	.018	5	2	4.0	14
G34329	PTA4-18-150-5-4	.018	5	4	4.0	14
G34330	PTA4-18-150-5-6	.018	5	6	4.0	14
G34331	PTA4-18-150-5-8	.018	5	8	4.0	14
G34332	PTA4-18-150-5-10	.018	5	10	4.0	14
G30955	PTA4-18-150-5-12	.018	5	12	4.0	12
G30956	PTA4-18-150-5-15	.018	5	15	4.0	12
G34167	PTA4-18-150-5-17	.018	5	17	4.0	12
G30958	PTA4-18-150-5-20	.018	5	20	4.0	12
G34333	PTA4-18-150-6-2	.018	6	2	4.0	14
G34334	PTA4-18-150-6-4	.018	6	4	4.0	14
G34335	PTA4-18-150-6-6	.018	6	6	4.0	14
G34336	PTA4-18-150-6-8	.018	6	8	4.0	14
G34337	PTA4-18-150-6-10	.018	6	10	4.0	14
G30961	PTA4-18-150-6-12	.018	6	12	5.0	12
G30962	PTA4-18-150-6-15	.018	6	15	5.0	12
G30963	PTA4-18-150-6-17	.018	6	17	5.0	12
G30964	PTA4-18-150-6-20	.018	6	20	5.0	12

Some products or part numbers may not be available in all markets. Contact your local Cook representative or Customer Service for details.

Advance<sup>®</sup> 35LP

LOW-PROFILE PTA BALLOON DILATATION CATHETER

Order Number	Reference Part Number	Accepts Wire Guide Diameter inch	Balloon Inflated Diameter mm	Balloon Length cm	Recommended Introducer Fr	Rated Burst Pressure atm
<b>.035 inch Wire Guide - 80 cm Shaft</b>						
G52331	PTA5-35-80-4-2.0	.035	4	2	5.0	15
G52332	PTA5-35-80-4-4.0	.035	4	4	5.0	15
G34355	PTA5-35-80-4-6.0	.035	4	6	5.0	15
G52333	PTA5-35-80-4-8.0	.035	4	8	5.0	15
G52334	PTA5-35-80-4-10.0	.035	4	10	5.0	15
G52335	PTA5-35-80-4-12.0	.035	4	12	5.0	15
G52336	PTA5-35-80-4-14.0	.035	4	14	5.0	15
G34353	PTA5-35-80-4-17.0	.035	4	17	5.0	15
G34354	PTA5-35-80-4-20.0	.035	4	20	5.0	15
G52337	PTA5-35-80-5-2.0	.035	5	2	5.0	15
G52338	PTA5-35-80-5-4.0	.035	5	4	5.0	15
G52339	PTA5-35-80-5-6.0	.035	5	6	5.0	15
G52340	PTA5-35-80-5-8.0	.035	5	8	5.0	15
G52341	PTA5-35-80-5-10.0	.035	5	10	5.0	15
G52342	PTA5-35-80-5-12.0	.035	5	12	5.0	15
G52343	PTA5-35-80-5-14.0	.035	5	14	5.0	15
G34358	PTA5-35-80-5-17.0	.035	5	17	5.0	15
G34359	PTA5-35-80-5-20.0	.035	5	20	5.0	15
G52344	PTA5-35-80-6-2.0	.035	6	2	5.0	15
G52345	PTA5-35-80-6-4.0	.035	6	4	5.0	15
G52346	PTA5-35-80-6-6.0	.035	6	6	5.0	15
G52347	PTA5-35-80-6-8.0	.035	6	8	5.0	15
G52348	PTA5-35-80-6-10.0	.035	6	10	5.0	15
G52349	PTA5-35-80-6-12.0	.035	6	12	5.0	15
G52350	PTA5-35-80-6-14.0	.035	6	14	5.0	15
G34362	PTA5-35-80-6-17.0	.035	6	17	6.0	15
G34363	PTA5-35-80-6-20.0	.035	6	20	6.0	15
G52351	PTA5-35-80-7-2.0	.035	7	2	5.0	12
G52352	PTA5-35-80-7-4.0	.035	7	4	5.0	12
G52353	PTA5-35-80-7-6.0	.035	7	6	5.0	12
G52354	PTA5-35-80-7-8.0	.035	7	8	5.0	12
G52355	PTA5-35-80-7-10.0	.035	7	10	6.0	12
G52356	PTA5-35-80-7-12.0	.035	7	12	6.0	12
G52357	PTA5-35-80-7-14.0	.035	7	14	6.0	12
G34366	PTA5-35-80-7-17.0	.035	7	17	6.0	12
G34367	PTA5-35-80-7-20.0	.035	7	20	6.0	12

Order Number	Reference Part Number	Accepts Wire Guide Diameter inch	Balloon Inflated Diameter mm	Balloon Length cm	Recommended Introducer Fr	Rated Burst Pressure atm
<b>.035 inch Wire Guide - 135 cm Shaft</b>						
G52251	PTA5-35-135-4-2.0	.035	4	2	5.0	15
G52252	PTA5-35-135-4-4.0	.035	4	4	5.0	15
G35528	PTA5-35-135-4-6.0	.035	4	6	5.0	15
G52253	PTA5-35-135-4-8.0	.035	4	8	5.0	15
G52254	PTA5-35-135-4-10.0	.035	4	10	5.0	15
G52255	PTA5-35-135-4-12.0	.035	4	12	5.0	15
G52256	PTA5-35-135-4-14.0	.035	4	14	5.0	15
G34380	PTA5-35-135-4-17.0	.035	4	17	5.0	15
G35527	PTA5-35-135-4-20.0	.035	4	20	5.0	15
G52257	PTA5-35-135-5-2.0	.035	5	2	5.0	15
G52258	PTA5-35-135-5-4.0	.035	5	4	5.0	15
G52259	PTA5-35-135-5-6.0	.035	5	6	5.0	15
G52260	PTA5-35-135-5-8.0	.035	5	8	5.0	15
G52261	PTA5-35-135-5-10.0	.035	5	10	5.0	15
G52262	PTA5-35-135-5-12.0	.035	5	12	5.0	15
G52263	PTA5-35-135-5-14.0	.035	5	14	5.0	15
G35531	PTA5-35-135-5-17.0	.035	5	17	5.0	15
G35532	PTA5-35-135-5-20.0	.035	5	20	5.0	15
G52264	PTA5-35-135-6-2.0	.035	6	2	5.0	15
G52265	PTA5-35-135-6-4.0	.035	6	4	5.0	15
G52266	PTA5-35-135-6-6.0	.035	6	6	5.0	15
G52267	PTA5-35-135-6-8.0	.035	6	8	5.0	15
G52268	PTA5-35-135-6-10.0	.035	6	10	5.0	15
G52269	PTA5-35-135-6-12.0	.035	6	12	5.0	15
G52270	PTA5-35-135-6-14.0	.035	6	14	5.0	15
G35535	PTA5-35-135-6-17.0	.035	6	17	6.0	15
G35536	PTA5-35-135-6-20.0	.035	6	20	6.0	15
G52271	PTA5-35-135-7-2.0	.035	7	2	5.0	12
G52272	PTA5-35-135-7-4.0	.035	7	4	5.0	12
G52273	PTA5-35-135-7-6.0	.035	7	6	5.0	12
G52274	PTA5-35-135-7-8.0	.035	7	8	5.0	12
G52275	PTA5-35-135-7-10.0	.035	7	10	6.0	12
G52276	PTA5-35-135-7-12.0	.035	7	12	6.0	12
G52277	PTA5-35-135-7-14.0	.035	7	14	6.0	12
G35539	PTA5-35-135-7-17.0	.035	7	17	6.0	12
G35540	PTA5-35-135-7-20.0	.035	7	20	6.0	12

Some products or part numbers may not be available in all markets. Contact your local Cook representative or Customer Service for details.

## Advance® 18 PTX®

DRUG-ELUTING PTA BALLOON DILATATION CATHETER

Order Number	Reference Part Number	Wire Guide Diameter inch	Balloon Inflated Diameter mm	Balloon Length cm	Recommended Introducer Fr	Rated Burst Pressure atm
<b>.018 inch Wire Guide - 135 cm Shaft</b>						
G53262	PTA4-18-135-4-2-PTX	.018	4	2	5.0	12
G53263	PTA4-18-135-4-4-PTX	.018	4	4	5.0	12
G53281	PTA4-18-135-4-8-PTX	.018	4	8	5.0	12
G51133	PTA4-18-135-4-10-PTX	.018	4	10	5.0	12
G53265	PTA4-18-135-5-2-PTX	.018	5	2	6.0	12
G53266	PTA4-18-135-5-4-PTX	.018	5	4	6.0	12
G53267	PTA4-18-135-5-8-PTX	.018	5	8	6.0	12
G51135	PTA4-18-135-5-10-PTX	.018	5	10	6.0	12
G53268	PTA4-18-135-6-2-PTX	.018	6	2	6.0	12
G53269	PTA4-18-135-6-4-PTX	.018	6	4	6.0	12
G53270	PTA4-18-135-6-8-PTX	.018	6	8	6.0	12
G51137	PTA4-18-135-6-10-PTX	.018	6	10	6.0	12
G53271	PTA4-18-135-7-2-PTX	.018	7	2	6.0	12
G53272	PTA4-18-135-7-4-PTX	.018	7	4	6.0	12
G53274	PTA4-18-135-7-8-PTX	.018	7	8	6.0	12
G53275	PTA4-18-135-7-10-PTX	.018	7	10	6.0	12

Some products or part numbers may not be available in all markets. Contact your local Cook representative or Customer Service for details.

Zilver Flex<sup>®</sup> 35

VASCULAR SELF-EXPANDING STENT

Order Number	Reference Part Number	Accepts Wire Guide Diameter inch	Stent Diameter mm	Stent Length mm	Recommended Introducer Fr
<b>.035 inch Wire Guide - 80 cm Shaft</b>					
G51855	ZFV6-80-5-2.0	.035	5	20	6.0
G51857	ZFV6-80-5-3.0	.035	5	30	6.0
G51859	ZFV6-80-5-4.0	.035	5	40	6.0
G51860	ZFV6-80-5-6.0	.035	5	60	6.0
G51862	ZFV6-80-5-8.0	.035	5	80	6.0
G51864	ZFV6-80-5-10.0	.035	5	100	6.0
G51866	ZFV6-80-5-12.0	.035	5	120	6.0
G51868	ZFV6-80-5-14.0	.035	5	140	6.0
G52842	ZFV6-80-5-17.0	.035	5	170	6.0
G52843	ZFV6-80-5-20.0	.035	5	200	6.0
G51870	ZFV6-80-6-2.0	.035	6	20	6.0
G51871	ZFV6-80-6-3.0	.035	6	30	6.0
G51873	ZFV6-80-6-4.0	.035	6	40	6.0
G51875	ZFV6-80-6-6.0	.035	6	60	6.0
G51877	ZFV6-80-6-8.0	.035	6	80	6.0
G51879	ZFV6-80-6-10.0	.035	6	100	6.0
G51880	ZFV6-80-6-12.0	.035	6	120	6.0
G51882	ZFV6-80-6-14.0	.035	6	140	6.0
G52844	ZFV6-80-6-17.0	.035	6	170	6.0
G52845	ZFV6-80-6-20.0	.035	6	200	6.0
G51884	ZFV6-80-7-2.0	.035	7	20	6.0
G51886	ZFV6-80-7-3.0	.035	7	30	6.0
G51888	ZFV6-80-7-4.0	.035	7	40	6.0
G51889	ZFV6-80-7-6.0	.035	7	60	6.0
G51891	ZFV6-80-7-8.0	.035	7	80	6.0
G51893	ZFV6-80-7-10.0	.035	7	100	6.0
G51895	ZFV6-80-7-12.0	.035	7	120	6.0
G51897	ZFV6-80-7-14.0	.035	7	140	6.0
G52846	ZFV6-80-7-17.0	.035	7	170	6.0
G52847	ZFV6-80-7-20.0	.035	7	200	6.0
G51898	ZFV6-80-8-2.0	.035	8	20	6.0
G51900	ZFV6-80-8-3.0	.035	8	30	6.0
G51902	ZFV6-80-8-4.0	.035	8	40	6.0
G51903	ZFV6-80-8-6.0	.035	8	60	6.0
G51905	ZFV6-80-8-8.0	.035	8	80	6.0
G51907	ZFV6-80-8-10.0	.035	8	100	6.0
G51908	ZFV6-80-8-12.0	.035	8	120	6.0
G51910	ZFV6-80-8-14.0	.035	8	140	6.0
G52849	ZFV6-80-8-20.0	.035	8	200	6.0

## Zilver Flex® 35

VASCULAR SELF-EXPANDING STENT

Order Number	Reference Part Number	Accepts Wire Guide Diameter inch	Stent Diameter mm	Stent Length mm	Recommended Introducer Fr
<b>.035 inch Wire Guide - 125 cm Shaft</b>					
G51941	ZFV6-125-5-2.0	.035	5	20	6.0
G51942	ZFV6-125-5-3.0	.035	5	30	6.0
G51944	ZFV6-125-5-4.0	.035	5	40	6.0
G51945	ZFV6-125-5-6.0	.035	5	60	6.0
G51943	ZFV6-125-5-8.0	.035	5	80	6.0
G51940	ZFV6-125-5-10.0	.035	5	100	6.0
G51938	ZFV6-125-5-12.0	.035	5	120	6.0
G51936	ZFV6-125-5-14.0	.035	5	140	6.0
G52850	ZFV6-125-5-17.0	.035	5	170	6.0
G52851	ZFV6-125-5-20.0	.035	5	200	6.0
G51934	ZFV6-125-6-2.0	.035	6	20	6.0
G51932	ZFV6-125-6-3.0	.035	6	30	6.0
G51930	ZFV6-125-6-4.0	.035	6	40	6.0
G51927	ZFV6-125-6-6.0	.035	6	60	6.0
G51926	ZFV6-125-6-8.0	.035	6	80	6.0
G51921	ZFV6-125-6-10.0	.035	6	100	6.0
G51918	ZFV6-125-6-12.0	.035	6	120	6.0
G51914	ZFV6-125-6-14.0	.035	6	140	6.0
G52852	ZFV6-125-6-17.0	.035	6	170	6.0
G52853	ZFV6-125-6-20.0	.035	6	200	6.0
G51913	ZFV6-125-7-2.0	.035	7	20	6.0
G51912	ZFV6-125-7-3.0	.035	7	30	6.0
G51911	ZFV6-125-7-4.0	.035	7	40	6.0
G51909	ZFV6-125-7-6.0	.035	7	60	6.0
G51906	ZFV6-125-7-8.0	.035	7	80	6.0
G51904	ZFV6-125-7-10.0	.035	7	100	6.0
G51901	ZFV6-125-7-12.0	.035	7	120	6.0
G51899	ZFV6-125-7-14.0	.035	7	140	6.0
G52854	ZFV6-125-7-17.0	.035	7	170	6.0
G52855	ZFV6-125-7-20.0	.035	7	200	6.0
G51896	ZFV6-125-8-2.0	.035	8	20	6.0
G51894	ZFV6-125-8-3.0	.035	8	30	6.0
G51892	ZFV6-125-8-4.0	.035	8	40	6.0
G51890	ZFV6-125-8-6.0	.035	8	60	6.0
G51887	ZFV6-125-8-8.0	.035	8	80	6.0
G51885	ZFV6-125-8-10.0	.035	8	100	6.0
G51883	ZFV6-125-8-12.0	.035	8	120	6.0
G51878	ZFV6-125-8-14.0	.035	8	140	6.0
G52857	ZFV6-125-8-20.0	.035	8	200	6.0

Some products or part numbers may not be available in all markets. Contact your local Cook representative or Customer Service for details.

**Zilver® PTX®**

DRUG-ELUTING PERIPHERAL STENT

Order Number	Reference Part Number	Accepts Wire Guide Diameter inch	Stent Diameter mm	Stent Length mm	Recommended Introducer Fr
<b>80 cm Introducer Length</b>					
G35302	ZISV6-35-80-5.0-40-PTX	.035	5	40	6.0
G35303	ZISV6-35-80-5.0-60-PTX	.035	5	60	6.0
G35304	ZISV6-35-80-5.0-80-PTX	.035	5	80	6.0
G35305	ZISV6-35-80-5.0-100-PTX	.035	5	100	6.0
G35306	ZISV6-35-80-5.0-120-PTX	.035	5	120	6.0
G35307	ZISV6-35-80-6.0-40-PTX	.035	6	40	6.0
G35308	ZISV6-35-80-6.0-60-PTX	.035	6	60	6.0
G35309	ZISV6-35-80-6.0-80-PTX	.035	6	80	6.0
G35310	ZISV6-35-80-6.0-100-PTX	.035	6	100	6.0
G35311	ZISV6-35-80-6.0-120-PTX	.035	6	120	6.0
G35312	ZISV6-35-80-7.0-40-PTX	.035	7	40	6.0
G35313	ZISV6-35-80-7.0-60-PTX	.035	7	60	6.0
G35314	ZISV6-35-80-7.0-80-PTX	.035	7	80	6.0
G35315	ZISV6-35-80-7.0-100-PTX	.035	7	100	6.0
G35316	ZISV6-35-80-7.0-120-PTX	.035	7	120	6.0
G35317	ZISV6-35-80-8.0-40-PTX	.035	8	40	6.0
G35318	ZISV6-35-80-8.0-60-PTX	.035	8	60	6.0
G35319	ZISV6-35-80-8.0-80-PTX	.035	8	80	6.0
G35320	ZISV6-35-80-8.0-100-PTX	.035	8	100	6.0
G35321	ZISV6-35-80-8.0-120-PTX	.035	8	120	6.0
<b>125 cm Introducer Length</b>					
G35273	ZISV6-35-125-5.0-40-PTX	.035	5	40	6.0
G35274	ZISV6-35-125-5.0-60-PTX	.035	5	60	6.0
G35275	ZISV6-35-125-5.0-80-PTX	.035	5	80	6.0
G35276	ZISV6-35-125-5.0-100-PTX	.035	5	100	6.0
G35277	ZISV6-35-125-5.0-120-PTX	.035	5	120	6.0
G35281	ZISV6-35-125-6.0-40-PTX	.035	6	40	6.0
G35282	ZISV6-35-125-6.0-60-PTX	.035	6	60	6.0
G35283	ZISV6-35-125-6.0-80-PTX	.035	6	80	6.0
G35284	ZISV6-35-125-6.0-100-PTX	.035	6	100	6.0
G35285	ZISV6-35-125-6.0-120-PTX	.035	6	120	6.0
G35286	ZISV6-35-125-7.0-40-PTX	.035	7	40	6.0
G35287	ZISV6-35-125-7.0-60-PTX	.035	7	60	6.0
G35288	ZISV6-35-125-7.0-80-PTX	.035	7	80	6.0
G35289	ZISV6-35-125-7.0-100-PTX	.035	7	100	6.0
G35290	ZISV6-35-125-7.0-120-PTX	.035	7	120	6.0
G35297	ZISV6-35-125-8.0-40-PTX	.035	8	40	6.0
G35298	ZISV6-35-125-8.0-60-PTX	.035	8	60	6.0
G35299	ZISV6-35-125-8.0-80-PTX	.035	8	80	6.0
G35300	ZISV6-35-125-8.0-100-PTX	.035	8	100	6.0
G35301	ZISV6-35-125-8.0-120-PTX	.035	8	120	6.0

Some products or part numbers may not be available in all markets. Contact your local Cook representative or Customer Service for details.

## Customer Service

**EMEA:** EDI - [www.cookmedical.com/edi.do](http://www.cookmedical.com/edi.do)  
Distributors: +353 61239240, [ssc.distributors@cookmedical.com](mailto:ssc.distributors@cookmedical.com)  
Austria: +43 179567121, [oe.orders@cookmedical.com](mailto:oe.orders@cookmedical.com)  
Belgium: +32 27001633, [be.orders@cookmedical.com](mailto:be.orders@cookmedical.com)  
Denmark: +45 38487607, [da.orders@cookmedical.com](mailto:da.orders@cookmedical.com)  
Finland: +358 972519996, [fi.orders@cookmedical.com](mailto:fi.orders@cookmedical.com)  
France: +33 171230269, [fr.orders@cookmedical.com](mailto:fr.orders@cookmedical.com)  
Germany: +49 6950072804, [de.orders@cookmedical.com](mailto:de.orders@cookmedical.com)  
Hungary: +36 17779199, [hu.orders@cookmedical.com](mailto:hu.orders@cookmedical.com)  
Ireland: +353 61239252, [ie.orders@cookmedical.com](mailto:ie.orders@cookmedical.com)  
Italy: +39 0269682853, [it.orders@cookmedical.com](mailto:it.orders@cookmedical.com)  
Netherlands: +31 202013367, [nl.orders@cookmedical.com](mailto:nl.orders@cookmedical.com)  
Norway: +47 23162968, [no.orders@cookmedical.com](mailto:no.orders@cookmedical.com)  
Spain: +34 912702691, [es.orders@cookmedical.com](mailto:es.orders@cookmedical.com)  
Sweden: +46 858769468, [se.orders@cookmedical.com](mailto:se.orders@cookmedical.com)  
Switzerland - French: +41 448009609, [fr.orders@cookmedical.com](mailto:fr.orders@cookmedical.com)  
Switzerland - Italian: +41 448009609, [it.orders@cookmedical.com](mailto:it.orders@cookmedical.com)  
Switzerland - German: +41 448009609, [de.orders@cookmedical.com](mailto:de.orders@cookmedical.com)  
United Kingdom: +44 2073654183, [uk.orders@cookmedical.com](mailto:uk.orders@cookmedical.com)

[www.cookmedical.com](http://www.cookmedical.com)

**Americas:** EDI - [www.cookmedical.com/edi.do](http://www.cookmedical.com/edi.do)  
Phone: +1 812.339.2235, 800.457.4500, Fax: 800.554.8335  
E-mail: [orders@cookmedical.com](mailto:orders@cookmedical.com)

**Australia:**  
Phone: +61 734346000, 1800777222, Fax: +61 734346001, 1800077283  
E-mail: [cau.custserv@cookmedical.com](mailto:cau.custserv@cookmedical.com)

